



# Data Explorer

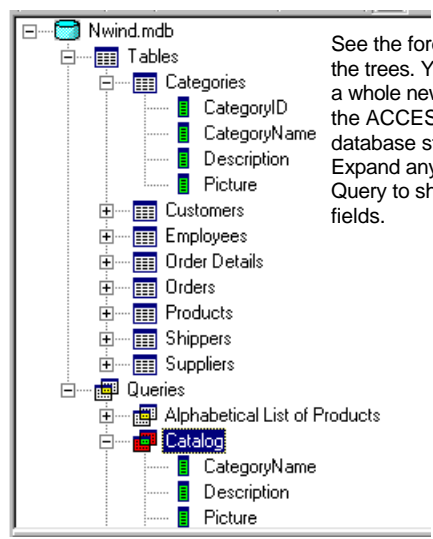


Your dream tool for tabular data set

## Open 4 different kinds of data files...

**1 ACCESS Database.** Data Explorer opens each Table and Query (prompt for parameters, if any) of an ACCESS database file and while you are navigating each row, Data Explorer presents to you an instant form view of each record. Now you have three panes: Table data, Structure tree and Instant form.

On the Structure Tree pane, under the root directory, there are Tables and Queries subdirectories. Click on any Table or Query to retrieve the Table or Query data on the right.



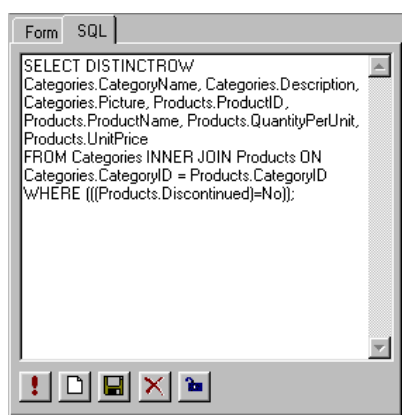
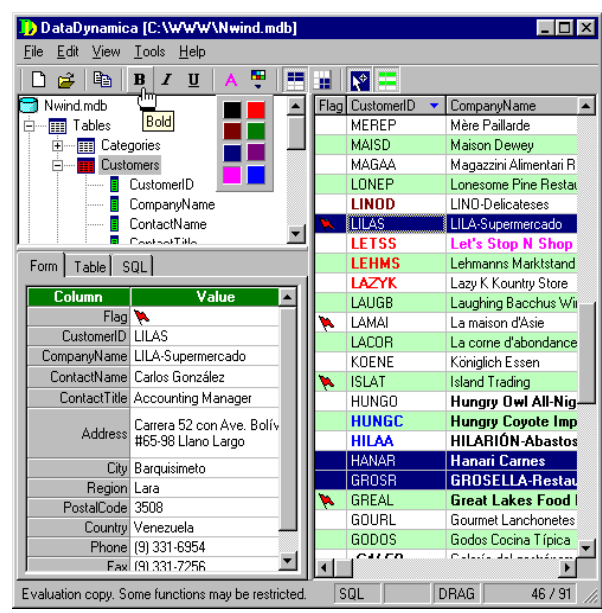
**4 And save to... TwinGrid Files** And finally you may save the current dfsworking data font styles and data types into a default binary grid file for faster loading. What you see is what you get. It is just like an Excel spreadsheet. You might want to always keep your data in this TwinGrid file format (\*.twg).  
**Yes, copy and paste your existing data to here.**

## Browse your data with great ease!

**Toolbar** Icons on the toolbar are self-explanatory. Move the cursor over the button to get instant tool tip help for that button.



*Just to name a few:* Flag Column, Font Type, Font Color, one-click Sort by any Column, Database Tree View, Query, SQL, Record Count, Record Num, Form View, adjustable Row Height, Multi-line Cell, Resizable Panels and Windows, Current File Name, Tables List, Fields List, Drag-Drop Copying, Mouse Pointer, Status Bar and Messages, International Language compatible, Click (row change), Double-Click (set flag), Right-Click (popup menu), Column Statistics, SQL, Menu Item Checked....



Open SQL syntax for each Query. Modify the SQL syntax and run the new SQL to get a new data set. On this SQL tab, there are buttons for Run, Create New, Save, Delete and Preserve (keeps current SQL unchanged as you navigate through other Queries).

**2 Comma Delimited and Tab Delimited Text files** You can open and save the data into a Comma Delimited (\*.csv) or Tab Delimited (\*.txt) flat text files. In this case you don't see the database structure tree. If the first row is the column header row, right click on the row and select **Set As Column Header Row** from the popup menu. Say good-bye to pure text data.

Column	Value
Flag	
EmployeeID	5
LastName	Buchanan
FirstName	Steven
Title	Sales Manager
TitleOfCourtesy	Mr.
BirthDate	3/4/55
HireDate	10/17/93
Address	14 Garrett Hill
City	London
Notes	Steven Buchanan graduated from St. Andrews University, Scotland with a BSC degree in 1976. Upon joining the company as a sales representative in 1992, he spent

Instant form view of one record. Note the adjustable row height to show long text field data. Additional Flag Column marks rows (records) for any purpose.

Data Explorer creates a working copy of your ACCESS database, so you don't have to worry the original data being altered.

DataDynamica.com

Flag	ContactName	Country
	Alejandra Camino	Spain
	Alexander Feuer	Germany
	Ana Trujillo	Mexico
	Anabela Domingues	Brazil
	André Fonseca	Brazil
	Ann Devon	UK
	Annette Roulet	France
	Antonio Moreno	Mexico
	Aria Cruz	Brazil
	Art Braunschweiger	USA
	Bernardo Batista	Brazil
	Carine Schmitt	France
	Carlos González	Venezuela
	Carlos Hernández	Venezuela
	Catherine Dewey	Belgium

Multiple selected rows ready to add flag, change font styles, delete, or copy-and-paste. Definitely, you will like the one-click two-way sorting feature.

Flag	OrderID	ProductID	UnitPrice	Quantity
	10439	16	13.9	16
	10439	64	26.6	6
	10439	74	8	30
	10440	2	15.2	45
	10440	16	13.9	49
	10440	29	99	24
	10440	61	22.8	90
	10441	27	35.1	50
	10442	11	16.8	30
	10442	54	5.9	80
	10442	66	13.6	60
	10443	11	16.8	6
	10443	28	36.4	12
	10444	17	31.2	10
	10444	26	24.9	15
	10444	35	14.4	8
	10444	41	7.7	30
	10445	39	14.4	6
	10445	54	5.9	15
	10446	19	7.3	12
	10446	24	2.6	20

Instant bar chart on any numeric column offers you a better idea of the scale of the data values.



Now delivered with CD-ROM. Easy to install. Plus sister products trial version all in one CD.

### All sister products share the same file format

#### TwinGrid Form Reader

A spreadsheet-like database tool to collect and manage form-based web page responses. Import responses from your email or download text file from host. A great tool for your internet businesses.

#### YellowPages2Mailing Labels

Collect and manage target mailing labels from the internet Yellow Pages searching engines. Your smart personal marketing tool for Direct Mail. One-click to print to the standard 3x10 or 2x10 address labels.

SA three-paned database explorer for ACCESS and flat text files. Browse data or ACCESS Tables and Queries with great ease. Create and run SQL on line. Save data to grid or flat text file.

#### Which one to use?

Each DataDynamica's product has its own unique function but works similarly. We suggest you to use TwinGrid to retrieve web form data, Y2M to print mailing labels and DataExplorer to manipulate data. Each one reads twg files.

#### When to use?

DataExplorer is perfect for student score, survey data, customer information, business, scientific and engineering data analysis.

#### How to use?

If you have ACCESS database, open it and save your work as a TWG grid file. Work on this TWG file next time when you open it. Play around with the sample files come with installation. Open sample CVS, TXT, and TWG files. If you already have data on Excel, copy the data and paste it to a new grid file.

If you are the first time user, go through all the tips from **Tip of The Day** window. Also, try Windows common events such as Double-click, Right-click, Highlight area, Drag-and-Drop, Copy-and-Paste, and see what you get.

Country	CompanyName	ContactName
Canada	Bottom-Dollar Markets	Elizabeth
	Laughing Bacchus Wine Cellars	Yoshi T
	Mère Paillard	Jean Fre
Brazil	Comércio Mineiro	Pedro Af
	Familia Arquibaldo	Aria Cruz
	Gourmet Lanchonetes	André Fo
	Hanari Carnes	Mario Po
	Que Delícia	Bernardo
	Queen Cozinha	Lúcia Ca
	Ricardo Adocicados	Janete L
Belgium	Tradição Hipermercados	Anabela
	Wellington Importadora	Paula Pe
Austria	Maison Dewey	Catherin
	Suprêmes délices	Pascale
Argentina	Ernst Handel	Roland M
	Piccolo und mehr	Georg S
	Cactus Comidas para llevar	Patricio S
	Océano Atlántico Ltda.	Yvonne
	Rancho grande	Sergio G

Merge cells. Note the color coding of group cells and fonts. Isn't this data presentation better than just tabular text?

Statistics	Value
Average	23.81
Standard Deviation	19.00
Interval	(Max-Min)/10 = 12.9
Max	110
Min	3
Ten - Interval	32
Histogram	80
	238
	326
	728
Min	705

Instant statistics of one numeric column provides you sum, average, standard deviation, Min, Max and histogram (frequency distribution) at one time.